

Accessible Hiking Trails

Cēsis, 24.09.2024

Interreg



Co-funded by
the European Union

Estonia – Latvia



What has been done

- Received as recommended wheelchair from Apeirons and Latvian Paralympic Committee
- Distributed information - widely
- Worked as advisors already



Honey for the soul



Pansionāts "Lauciene"

29. Augusts plkst. 22:14 · 🌐



"Lietas, kas izraisa prieku, nav derīgas, bet gan vajadzīgas, allaž pat nepieciešamas. Prieks ir dzīves jēga un dzīves smagmes iznīcinātājs." 🔥

— Zenta Mauriņa.

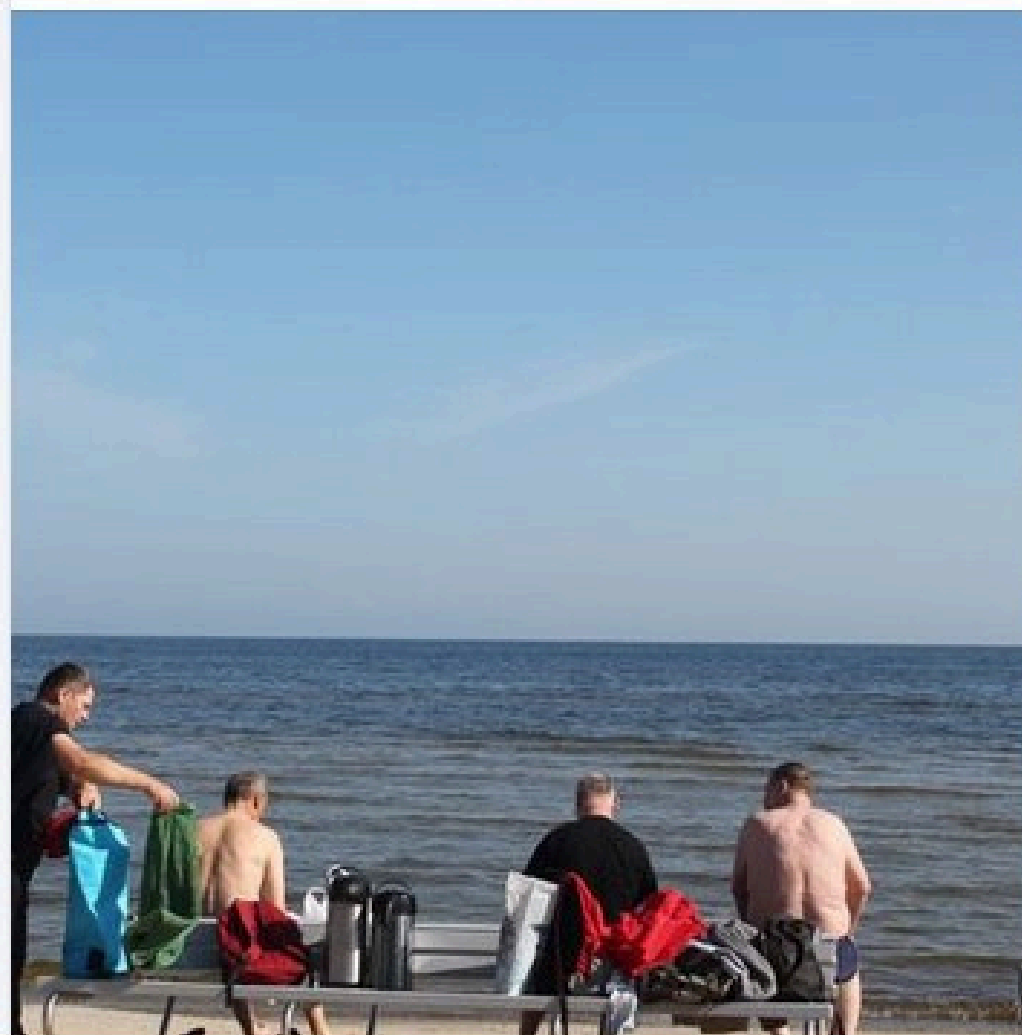
Gribam teikt Milzīgu PALDIES Kurzemes plānošanas reģionam un Engures pagasta pārvaldei, par iespēju izbaudīt jūras priekus ikvienam! 🧑🏻🧑🏻

Šī bija mūsu pirmā reize Apšuciema pludmalē, bet noteikti ne pēdējā! 🇸🇻

Šī vasara jau dodas uz izskaņas pusi, bet mēs ķeram mirkļus! 🌻

Šī nav pēdējā vasara! 🟡

Iesakām izmantot šo iespēju (peldošie rati) - cilvēkiem ar kustību traucējumiem - izpeldēties, izjust jūru, uzlādēties un gūt neaprostāmas emocijas, ko neaizmirst – tikai atkārtot un atkārtot! ✨



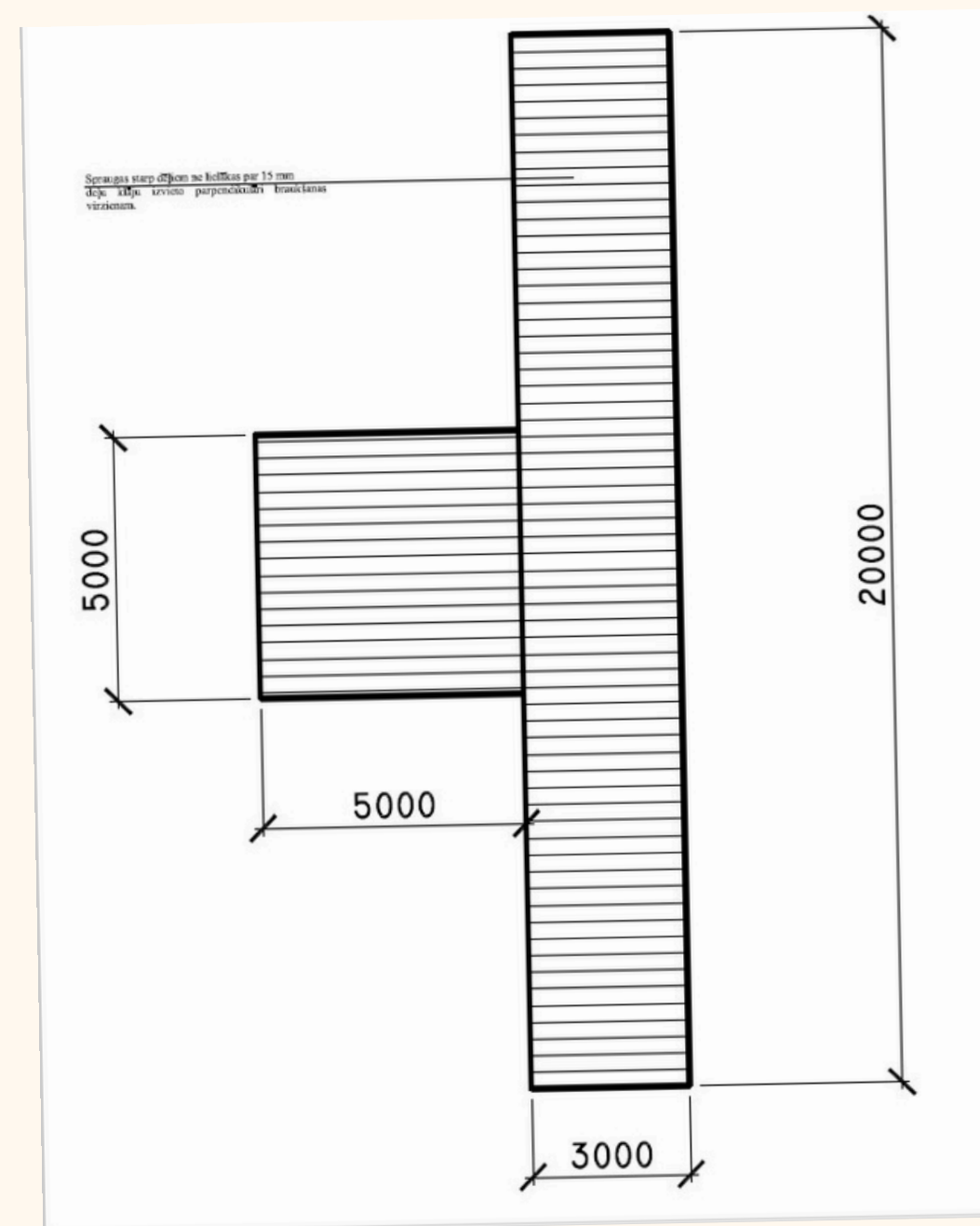
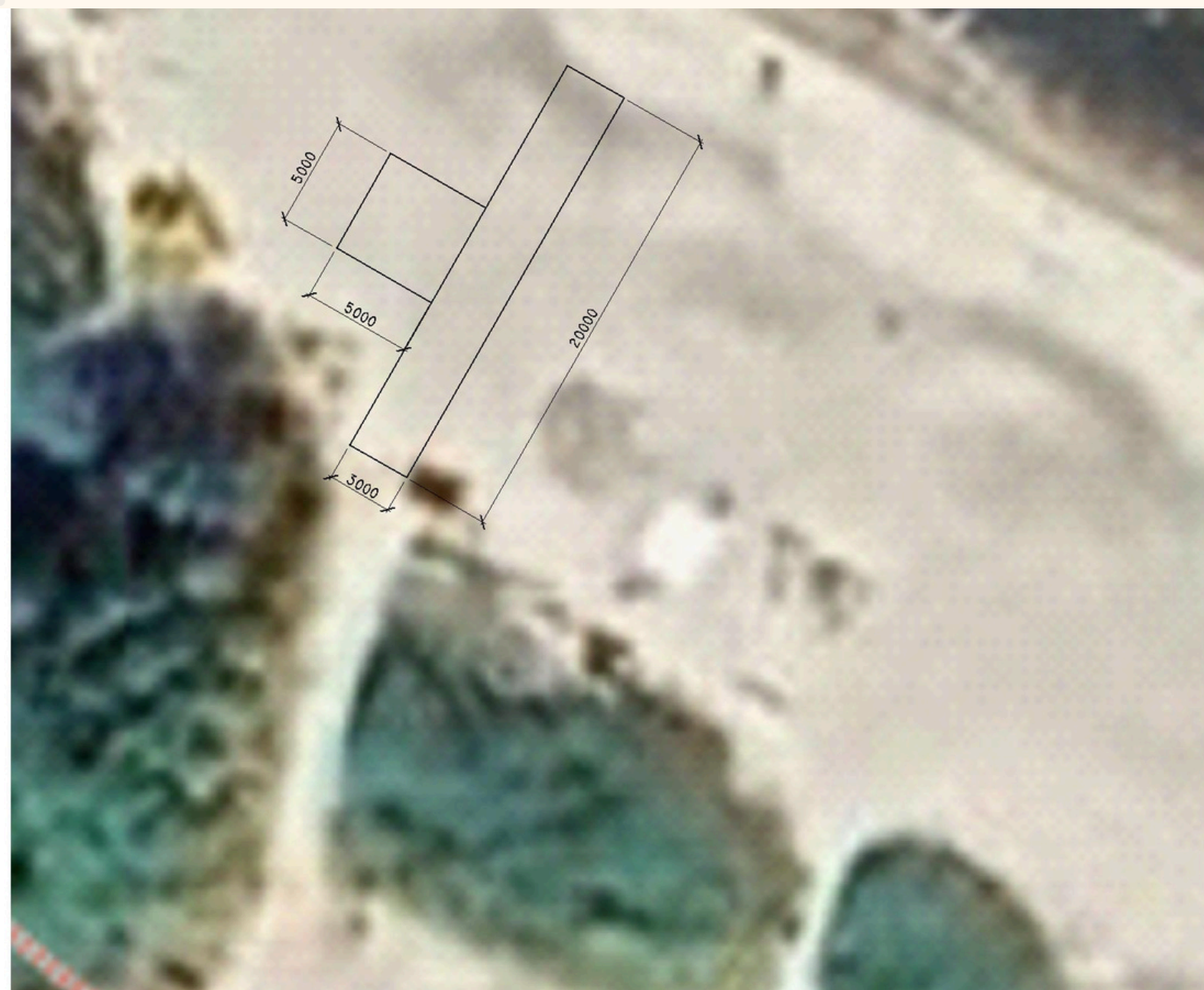
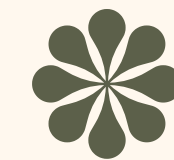
Promotion items

Promotional items (e.g.: T-shirts, cups, flags, banners, flyers, leaflets, etc.) will be produced to support social inclusion - for distribution in project events such as hiking piloting, the cross-border hikes and other with participation of hiking volunteers and the targeted social groups.



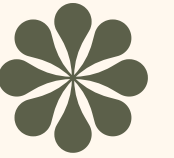


We received sketches and recommendations from Apeiron





Approvals received for additional activities

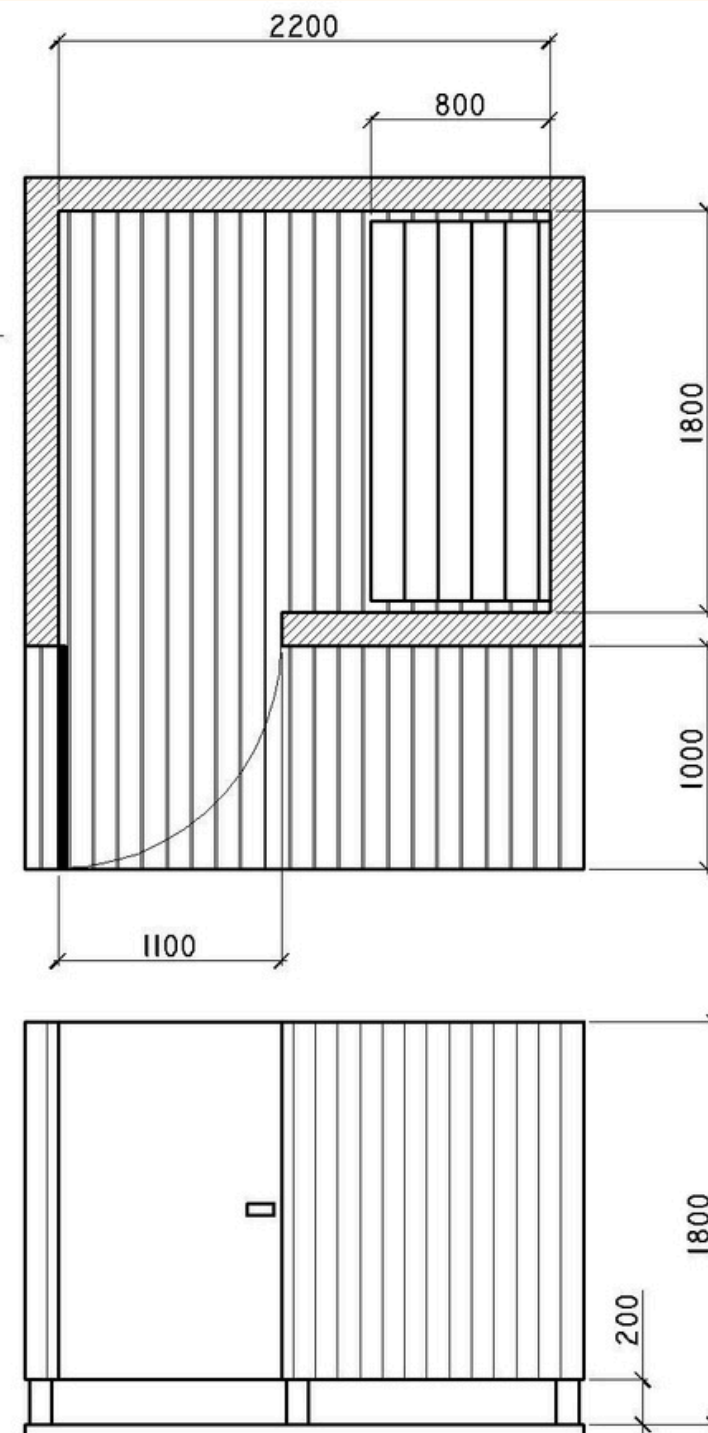


Lāva

Kabīnē jāparedz lāva 500 mm augstumā no grīdas. Lāvas platums 800 mm, garums vismaz 1700 mm. Lāvai jābūt ar nofrezētām apaļām malām.

Dēļu grīda

Evelēti dēļi, atstarpes starp dēļiem ne lielākas par 10 mm.



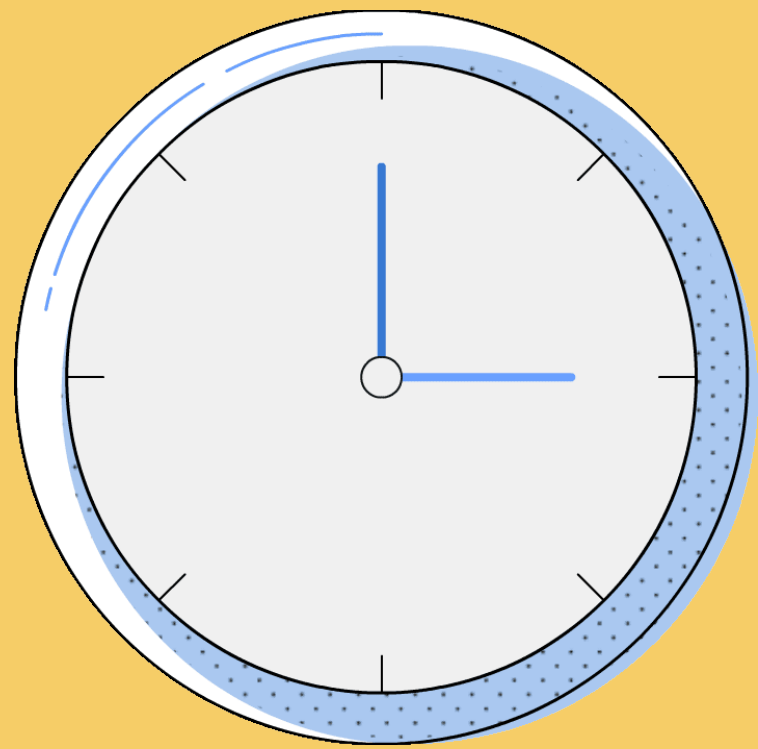
Bench

A bench shall be provided in the booth, 50 cm from the floor. The bench shall be at least 80 cm wide and 1,70 m long. The bench must have milled edges.

Board flooring

Planed boards, spaces between boards not exceeding 1 cm.

Next steps



Procurement will be done for construction trail, deck and changing cabin to allow installation in April/May 2025

Video

Audio guide for Forest trail (13), Coastal trail (21)

Prepare events for tourism specialist, service providers.



Thank you for attention



Aija Neilande
Kurzeme Planning region
+371 26147139
aija.neilande@kurzemesregions.lv