

**Interreg**

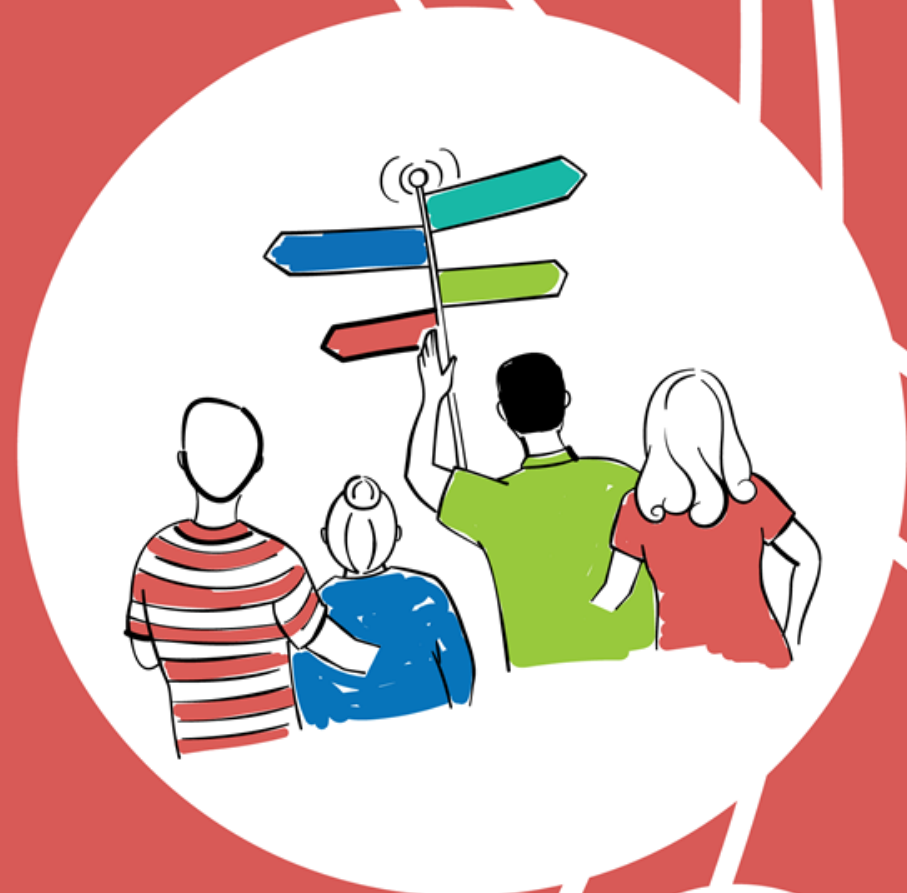


Co-funded by  
the European Union

Estonia – Latvia

# MIL-HER ACCESSIBLE Kick-off meeting

30 September – 1 October  
2024





# Project's indicators

## Output indicators

- Organisation cooperating across borders (12)
- Pilot actions developed jointly and implemented in projects (11)
- Jointly developed solutions (4)

## Result indicators

Organisations cooperating across borders after project completion (12)

Solutions taken up or up-scaled by organisations (4)



# Organisations cooperating across borders

- The organisations cooperating formally in supported projects.
- The organisations counted in this indicator are the legal entities including **project partners** as mentioned in the financing agreement of the application.





# **Project's output indicator: Estonian and Latvian project partner organisations cooperating**

Project partner organisations will cooperate for dissemination, marketing and promotion of the cross-border Military Heritage tourism product as a socially inclusive, innovative tourism offering with improved accessibility for different social groups.



# Organisations cooperating across borders after project completion

- The organisations cooperating across borders after the completion of the supported projects.
- The organisations are legal entities involved in project implementation.
- The cooperation concept should be interpreted as having a statement that the entities have a formal agreement to continue cooperation, after the end of the supported project.



# Project's result indicator

Partner organisations will continue their cooperation after project completion within the cross-border Military Heritage tourism network.

Interreg



Co-funded by  
the European Union

Estonia – Latvia



# Pilot actions developed jointly and implemented in projects

- The pilot actions derive from/in line with the joint strategy and action plan.
- Developed jointly and implemented in projects.
- The scope: to test procedures, new instruments, tools, experimentation, transfer of practices, etc.
- To be counted for this indicator:
  - the pilot actions must not only to be developed, but also implemented within the project and
  - the pilot actions should be finalised by the end of the project



# Jointly developed solutions

- Solutions result from joint pilot actions implemented by supported projects
- Involvement of organisations from both sides of the border
- To be counted for this indicator:
  - an identified solution should include indicators of the actions needed for it to be taken up or to be upscaled.





# Project's output indicators: **Pilot actions developed jointly and implemented**

Pilot actions will be developed jointly and implemented for:

1. Karosta Prison in Liepāja
2. Karosta Redan in Liepāja
3. The Secret Soviet Bunker (Medical Rehabilitation Centre Līgatne)
4. Zvārde military firing grounds in Saldus region
5. Melanija Vanaga museum in Cēsis region
6. Saaremaa Military Equipment Museum
7. Railway and Communications Museum in Haapsalu
8. Estonian War Museum in Tartu
9. Estonian Aviation Museum
10. Hiiumaa Military Equipment Museum
11. Orjaku Military Harbor





# Project's output indicators

## Accessibility solutions for school-aged youth and people with restrictions

1. Content and performance format accessibility solution for school-aged youth.
2. Accessibility solution for individuals with visual impairment restrictions.
3. Accessibility solution for individuals with reduced mobility restrictions.
4. Accessibility solution for individuals with claustrophobic restrictions.



# Solutions taken up or up-scaled by organisations

- Solution developed by the project and is taken up or upscaled **during the project or within one year after project.**
- The organisation adopting the solution may or may not be a participant in the project.
- The uptake / up-scaling should be documented by the adopting organisations in, for instance, strategies, action plans, etc.



# Project's result indicator

Accessibility solutions implemented in 11 Military Heritage tourism sites improving accessibility of the tourism product to the targeted social groups. The 4 jointly developed solutions adapted to the specific conditions for each site.



# Mandatory deliverables

- 1) **The upgraded or new cross-border tourism product or service that is jointly developed taking into account the aspects of social inclusion, social innovation and accessibility must be considered in developing pilot actions and solutions.**
- 2) **At least 10 improved natural or cultural heritage sites in both countries combined. The improvement of natural or cultural heritage sites must be based on the aspects of social inclusion, social innovation and accessibility.**





# Project's deliverables (I)

## 1) Upgraded cross-border Military Heritage Tourism product.

The upgrades for accessibility and social inclusion will be evident on the Military Heritage tourism platform [militaryheritagetourism.info](http://militaryheritagetourism.info): information regarding accessibility of the sites will be incorporated, and the implemented accessibility solutions will be highlighted.



# Project's deliverables (II)

## 2) Improved natural or cultural heritage sites (11)

- **Improved site - Karosta Prison:** Accessibility solution for school-aged youth implemented in Karosta Prison: theatrical audio guide with recorded content and playback equipment.
- **Improved site - Karosta Redan:** Accessibility solution for school-aged youth implemented in Karosta Redan: theatrical audio guide with recorded content and playback equipment.
- **Improved site - Secret Soviet Bunker:** Accessibility solutions for school-aged youth, visually impaired people, and people with claustrophobic anxiety implemented Secret Soviet Bunker.
- **Improved site - Zvārde military firing ground:** Accessibility solution for people with mobility restrictions implemented in Zvārde military firing ground.
- **Improved site - Melānija Vanaga museum:** Accessibility solution for school-aged youth implemented in Melānija Vanaga museum.





# Project's deliverables (III)

- **Improved site - Saaremaa Military Equipment Museum:** Accessibility solutions for school-aged youth and people with visual impairment restrictions implemented in Saaremaa Military Equipment Museum.
- **Improved site - Railway and Communications Museum:** Accessibility solutions for school-aged youth and people with visual impairment restrictions implemented in Railway and Communications Museum
- **Improved site - Tartu Branch of the Estonian War Museum:** Accessibility solutions for school-aged youth, people with visual impairment restrictions, and for the elderly visitors will be implemented in Tartu Branch of the Estonian War Museum.
- **Improved site - Estonian Aviation Museum:** Accessibility solutions for school-aged youth and for people with reduced mobility restrictions will be implemented in the Estonian Aviation Museum.
- **Improved site - Hiiumaa Military Museum:** Accessibility solution for school-aged youth will be implemented in Hiiumaa Military Museum.
- **Improved site - Orjaku Military Harbour:** Accessibility solution for school-aged youth will be implemented in Orjaku Military Harbour.







# Important!

- **Cooperation during the project**
- **Communication and visibility**
  - Communication among the partners
  - Communication with the programme authorities (Joint Secretariat!)
  - Communication about the project





# Important!

- **Application Form:** <https://jems.estlat.eu/>
- **Programme rules (programme manual for the 2nd call!):** <https://estlat.eu/en/projects/guiding-documents>
- **Visibility guidelines:** <https://estlat.eu/en/projects/visibility>



# State aid

- Support in any form when it is granted to a selected legal entity (undertaking) by public authority and gives advantage to the undertaking over its competitors.
- All entities that are engaged in economic activity, regardless of their legal status and whether they aim to make profit, are considered to be undertakings.
- State aid is granted **directly as funding to project partners** or **indirectly for participations in project activities.**





# Indirect state aid

- When planning activities with participation of undertakings (e.g., trainings, mentoring, participation in trade fairs, etc.) or for undertakings (e.g., investments etc.), the undertakings must be regarded as third parties receiving indirect State aid.
- Indirect State aid is granted by project partners.
- Project partners can plan up to 22 000 euros per undertaking per project for indirect aid receivers.

**Interreg**



Co-funded by  
the European Union

Estonia – Latvia

**Thank you for the  
attention!**

<https://estlat.eu/>

<https://www.facebook.com/estl>

